

SAE Executive Standards Committee Rules provide that: " This report is published by SAE to advance the state of technical and engineering sciences. The use of this report is entirely voluntary, and its applicability and suitability for any particular use, including any patent infringement arising therefrom, is the sole responsibility of the user."

SAE reviews each technical report at least every five years at which time it may be revised, reaffirmed, stabilized, or cancelled. SAE invites your written comments and suggestions.

REV.
B

AS1652™

FEDERAL SUPPLY CLASS
4730

RATIONALE

THIS TECHNICAL REPORT IS BEING STABILIZED BECAUSE IT COVERS TECHNOLOGY, PRODUCTS, OR PROCESSES WHICH ARE MATURE AND NOT LIKELY TO CHANGE IN THE FORESEEABLE FUTURE.

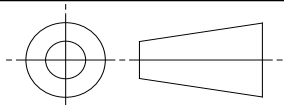
STABILIZED NOTICE

THIS DOCUMENT HAS BEEN DECLARED "STABILIZED" BY SAE G-3, AEROSPACE COUPLINGS, FITTINGS, HOSE, TUBING ASSEMBLIES COMMITTEE AND WILL NO LONGER BE SUBJECTED TO PERIODIC REVIEWS FOR CURRENCY. USERS ARE RESPONSIBLE FOR VERIFYING REFERENCES AND CONTINUED SUITABILITY OF TECHNICAL REQUIREMENTS. NEWER TECHNOLOGY MAY EXIST.

SAENORM.COM : Click to view the full PDF of as1652b

For more information on this standard, visit
<https://www.sae.org/standards/content/AS1652B/>

THIRD ANGLE PROJECTION



CUSTODIAN: G-3/G-3A

PROCUREMENT SPECIFICATION: AS1650 /5/



AEROSPACE STANDARD

COUPLING ASSEMBLY, THREADLESS - FLEXIBLE,
FIXED CAVITY, SELF-BONDING

AS1652™

REV.
B

ISSUED 1992-03 REVISED 1999-01 REAFFIRMED 2013-01 STABILIZED 2024-08

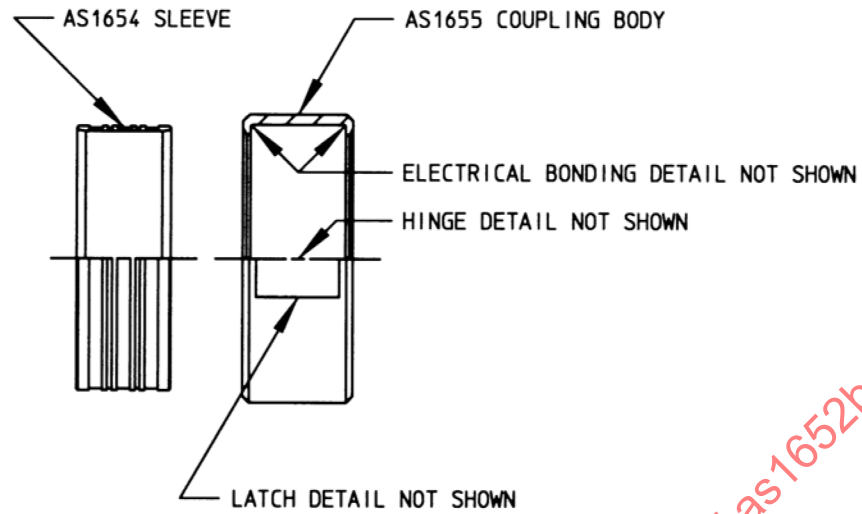


FIGURE 1 - COUPLING ASSEMBLY, EXPLODED VIEW

TABLE 1 - COUPLING ASSEMBLY WEIGHTS

BASIC NO. AS1652 /14/ SIZE CODE	NOM TUBE SIZE REF	LB/EA MAX ALUM	LB/EA MAX CRES	LB/EA MAX TI
08	.500	.039	.107	TBD
10	.625	.040	.114	TBD
12	.750	.051	.139	TBD
16	1.000	.062	.175	TBD
20	1.250	.069	.193	TBD
24	1.500	.078	.217	TBD
28	1.750	.084	.233	TBD
32	2.000	.100	.274	TBD
36	2.250	.114	.321	TBD
40	2.500	.126	.356	TBD
48	3.000	.178	.501	TBD
56	3.500	.215	.606	TBD
64	4.000	.289	.813	TBD