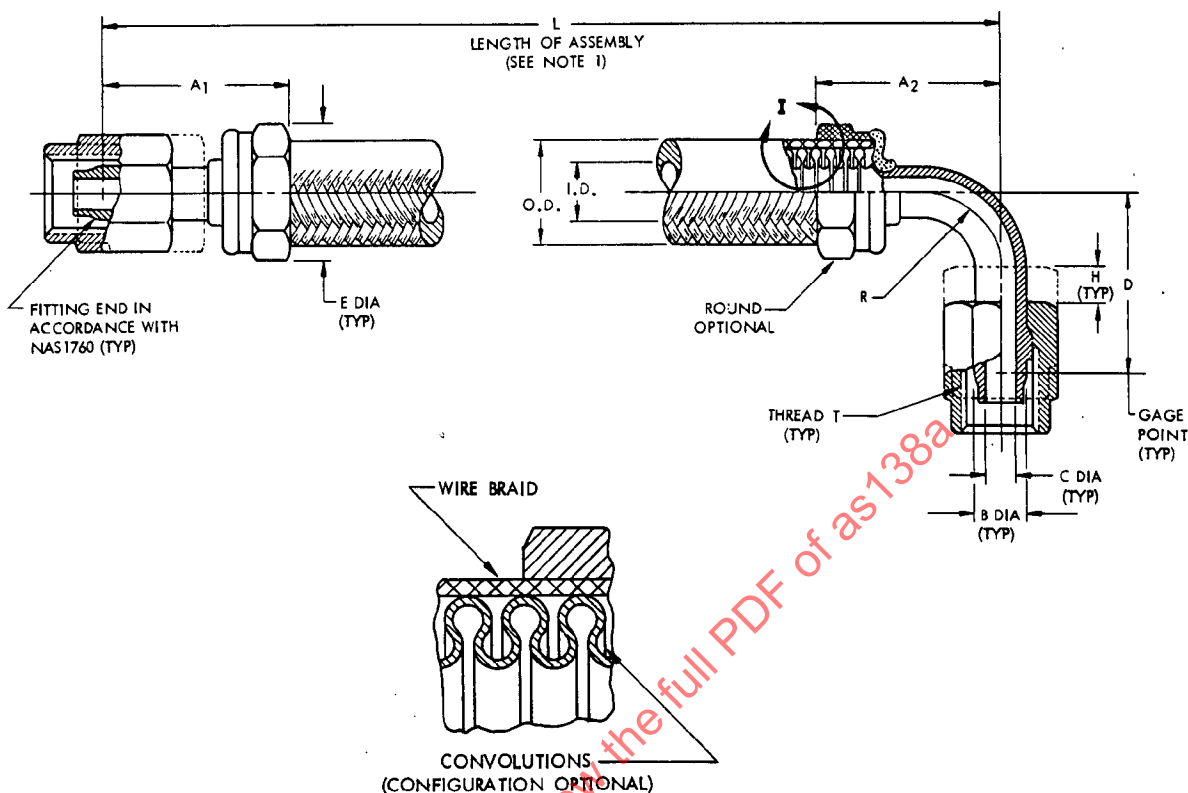


AS138

THIS REVISION CONTAINS ONLY EDITORIAL CHANGES.



DETAIL I

TABLE I

HOSE ASSY. SIZE CODE	HOSE SIZE (REF)	TUBE SIZE (REF)	A		B GAGE DIA. BASIC	C MIN. DIA. THRU 4	D		E ENVELOPE DIA. MAX.	H MIN. 2	R (REF)	THREAD T PER MIL-S-8879 (REF)	HOSE	
			A1 MAX.	A2 MAX.			MIN.	MAX.					I.D. MIN.	O.D. MAX.
04	1/4	1/4	1.25	1.18	.2930	.141	.83	1.08	.900	.40	.250	.4375-20UNJF-3B	.23	.56
06	3/8	3/8	1.38	1.31	.4120	.250	.98	1.23	1.200	.40	.375	.5625-18UNJF-3B	.34	.70
08	1/2	1/2	1.56	1.50	.5600	.360	1.23	1.54	1.300	.47	.500	.7500-16UNJF-3B	.45	.86
10	5/8	5/8	1.75	1.75	.6730	.455	1.56	1.87	1.500	.53	.625	.8750-14UNJF-3B	.57	1.00
12	3/4	3/4	1.94	2.06	.8100	.568	1.67	2.05	1.740	.53	.750	1.0625-12UNJ-3B	.70	1.15
16	1	1	2.12	2.50	1.0620	.760	1.84	2.22	2.300	.53	1.000	1.3125-12UNJ-3B	.95	1.45
20	1-1/4	1-1/4	2.38	2.97	1.3160	.920	2.09	2.59	2.850	.54	1.250	1.6250-12UNJ-3B	1.20	1.75

TABLE II

HOSE ASSEMBLY LENGTH	AVAILABLE LENGTH INCREMENTS	LENGTH TOLERANCE
UNDER 10 INCHES	(NOT LESS THAN) 1/8 INCH	(PLUS OR MINUS) .062 INCH
10 TO 36 INCHES	(NOT LESS THAN) 1/8 INCH	(PLUS OR MINUS) .125 INCH
36 TO 50 INCHES	(NOT LESS THAN) 1/4 INCH	(PLUS OR MINUS) .250 INCH
OVER 50 INCHES	(NOT LESS THAN) 1/2 INCH	(PLUS OR MINUS) 1/8

REAFFIRMED

APR 1 1994

PREPARED BY SAE COMMITTEE G-3, AEROSPACE FITTINGS, HOSE AND TUBE ASSEMBLIES

SAE The Engineering Society
For Advancing Mobility
Land Sea Air and Space®

AEROSPACE STANDARD

HOSE ASSEMBLY, METAL - MEDIUM PRESSURE,
FLARELESS, WELDED, STRAIGHT TO 90°

AS138

SHEET 1 OF 2